

DESIGN
TEX

Appleseed
2682

Upholstery
Panel

environmental Design
extreme Performance

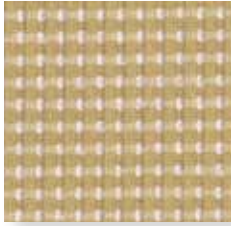


Appleseed

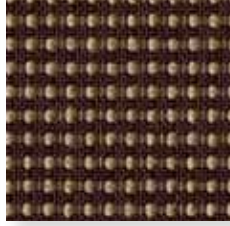
2682



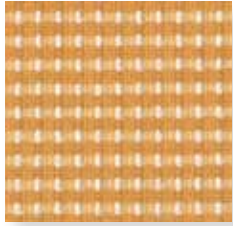
2682-101 Linen



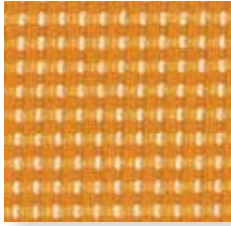
2682-102 Parchment



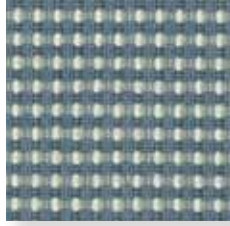
2682-103 Praline



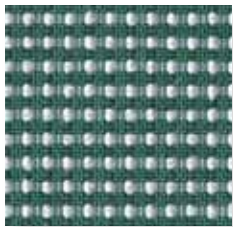
2682-201 Sesame



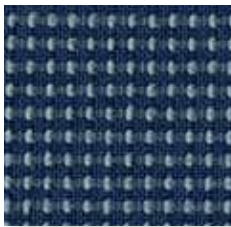
2682-202 Dandelion



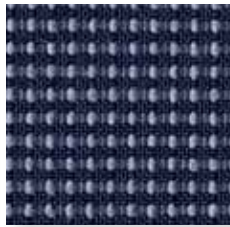
2682-401 Wedgewood



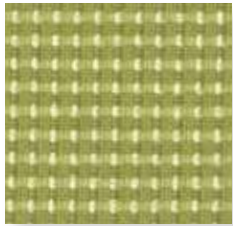
2682-402 Lake



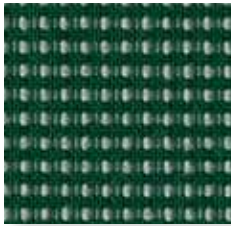
2682-403 Indigo



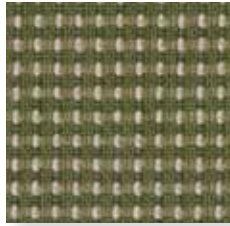
2682-404 Iris



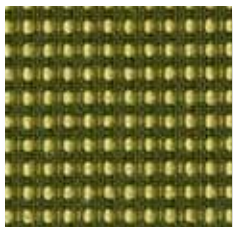
2682-501 Endive



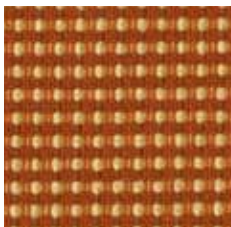
2682-502 Spruce



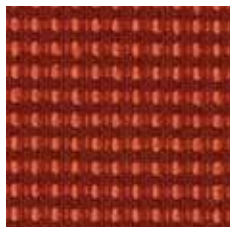
2682-503 Lichen



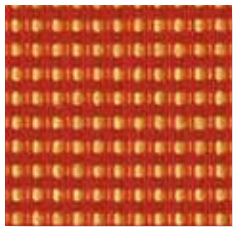
2682-505 Cypress



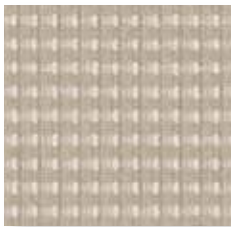
2682-701 Harvest



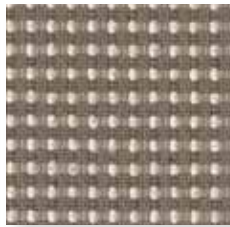
2682-702 Paprika



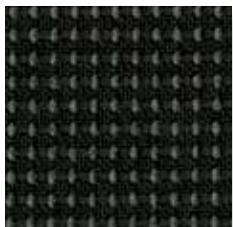
2682-703 Marigold



2682-801 Fog



2682-802 Graphite



2682-803 Cinder

Usage	Upholstery Panel Systems
Width	55"
Repeat	none
Weight	16.5 oz./lin.yd.
Finish	NanoSphere®
Contents	100% Recycled Polyester
Abrasion	100,000 Wyzenbeek
Cleaning Code	WS
Warranty	10 years

Passes ASTM E-84 Unadhered Class A

Custom colors available through Unique Solutions.

Meets or exceeds these ACT Performance standards:



* ACT Registered Certification Marks

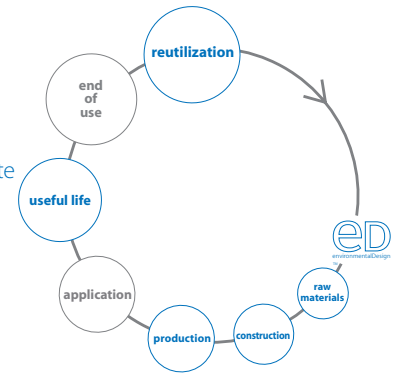


Based on environmentally optimal C6 nanotechnology, NanoSphere® offers:

- Superior stain resistance
- Water repellent
- Easy cleaning
- Durable and long lasting
- Maintains textile appearance and character
- NanoSphere technology is based on the bluesign® standard

environmental Design

recycled ingredients
compatible for closed loop
energy use
water use
reutilization of production waste
low emitting
recyclable



There may be variation in color, texture and finish between the sample shown and the actual product.

© Designtex

Designtex
800.221.1540
designtex.com

Designtex operates as a carbon neutral company

A Steelcase Company

Bubble Wrap
4124

Panel



Bubble Wrap

4124



4124-101 Moon



4124-501 Lime



4124-401 Ice Blue



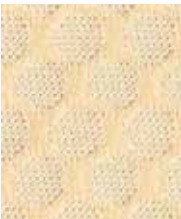
4124-106 Moon Rev.



4124-502 Lime Rev.



4124-402 Ice Blue Rev.



4124-102 Shell



4124-105 Mocha



4124-801 Sterling



4124-107 Shell Rev.



4124-110 Mocha Rev.



4124-803 Sterling Rev.



4124-103 Flax



4124-201 Gold



4124-802 Iron



4124-108 Flax Rev.



4124-202 Gold Rev.



4124-804 Iron Rev.



4124-104 Cinnamon



4124-109 Cinnamon Rev.

Usage	Panel Systems
Width	66"
Repeat	V-1/2" H- 1/2"
Weight	10.52 oz./lin.yd.
Contents	77 1/2% Eco-Intelligent™ Polyester
	22 1/2% Polyester
Cleaning Code	WS
Warranty	10 years

Passes ASTM E-84 Unadhered Class A

Custom colors available through Unique Solutions.

Meets or exceeds these ACT Performance standards:

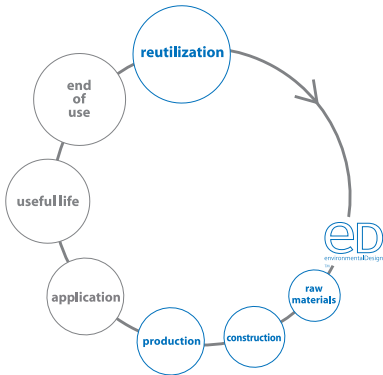


* ACT Registered Certification Marks



environmental Design

antimony free catalyst
compatible for closed loop
energy use
water use
recyclable



There may be variation in color, texture and finish between the sample shown and the actual product.

© Designtex

Designtex
800 221 1540
designtex.com

Designtex operates as a carbon neutral company
A Steelcase Company

DESIGN
Tex

Canvas
4121

Panel

environmental Design



Canvas
4121



4121-101 Eggshell



4121-102 Taupe



4121-501 Parchment



4121-801 Cobalt



4121-103 Raw Sienna



4121-802 French Gray

Usage	Panel Systems
Width	68"
Repeat	none
Weight	12 oz./lin.yd.
Contents	100% Recycled Polyester
Cleaning Code	WS
Warranty	10 years

Fabric shown railroaded.

Passes ASTM E-84 Unadhered Class A

Custom colors available through Unique Solutions.

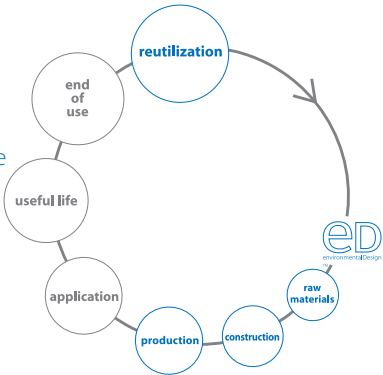
Meets or exceeds these ACT Performance standards:



* ACT Registered Certification Marks

environmental Design

recycled ingredients
compatible for closed loop
reutilization of production waste
recyclable



There may be variation in color, texture and finish
between the sample shown and the actual product.

© Designtex

Designtex
800 221 1540
designtex.com

Designtex operates as a carbon neutral company
A Steelcase Company

DESIGN
TEX

Clew
4207

Panel

environmental Design



Clew
4207



4207-101 Tundra



4207-103 Husk



4207-801 Tatami



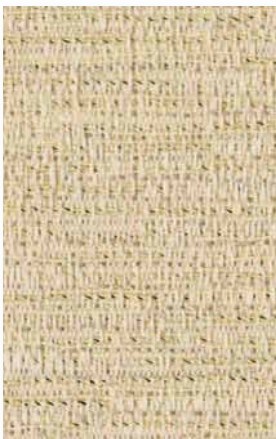
4207-201 Ravani



4207-802 Fjord



4207-104 Flax



4207-102 Parchment

Usage	Panel Systems
Width	66"
Repeat	V-6 3/4" H-8 1/4"
Weight	12.48 oz./lin.yd.
Contents	100% Recycled Polyester
Cleaning Code	WS
Warranty	10 years

Passes ASTM E-84 Unadhered Class A

Custom colors available through Unique Solutions.

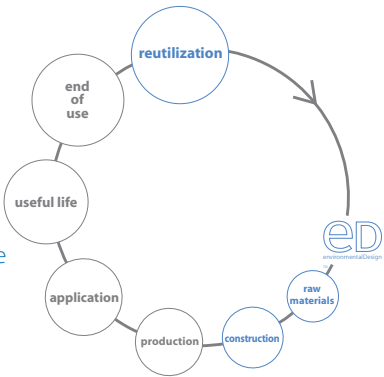
Meets or exceeds these ACT Performance standards:



* ACT Registered Certification Marks

environmental Design

recycled ingredients
compatible for closed loop
energy use
water use
reutilization of production waste
low emitting
recyclable



There may be variation in color, texture and finish
between the sample shown and the actual product.

© Designtex

Designtex
800 221 1540
designtex.com

Designtex operates as a carbon neutral company
A Steelcase Company

Cut to the Chase
2423

Panel



Cut to the Chase
2423



2423-104 Whitecap



2423-206 Wheat



2423-404 Twilight



2423-106 Eggshell



2423-207 Camel



2423-701 Clementine



2423-205 Cream



2423-505 Cement



2423-301 Candy Apple



2423-806 Alabaster



2423-506 Peridot



2423-302 Scarlet



2423-107 Taupe



2423-204 Buttercup



2423-105 Dark Chocolate



2423-108 Putty



2423-503 Key Lime



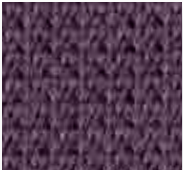
2423-804 Storm



2423-807 Oyster



2423-504 Grass



2423-601 Eggplant



2423-405 Glacier



2423-402 Caribbean



2423-805 Midnight



2423-808 Silver



2423-403 Heron Blue

Usage	P
Width	66"
Repeat	none
Weight	11 oz./lin.yd.
Contents	90% Polyester 10% Recycled Polyester
Cleaning Code	WS
Warranty	10 years

Passes ASTM E-84 Unadhered Class A

Custom colors available through Unique Solutions.

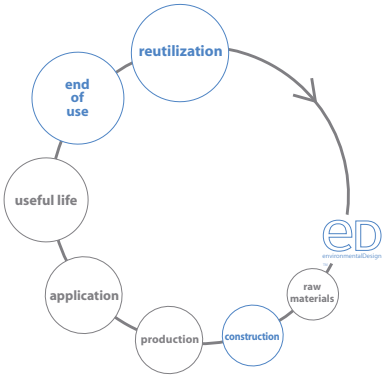
Meets or exceeds these ACT Performance standards:



* ACT Registered Certification Marks

environmental Design

compatible for closed loop
take back program
recyclable



This product may contribute to the LEED Materials and Resources Credit for Recycled Content.

There may be variation in color, texture and finish between the sample shown and the actual product.

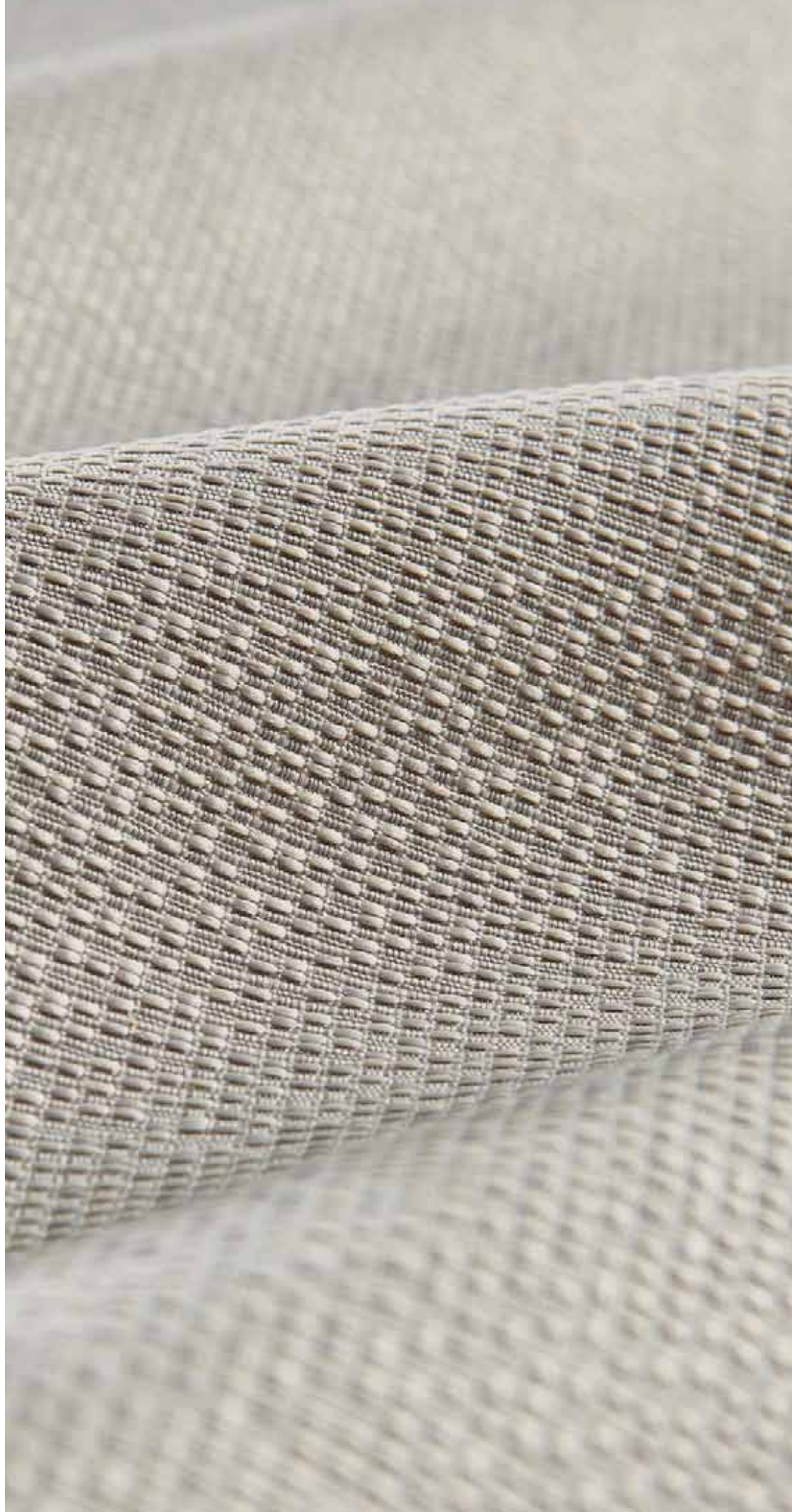
© Designtex

Designtex
800 221 1540
designtex.com

Designtex operates as a carbon neutral company
A Steelcase Company

Decibel
4108

Panel



Decibel
4108



4108-101 Buttercream



4108-801 Snow



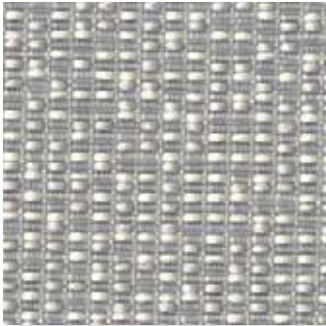
4108-103 Ecru



4108-102 Almond



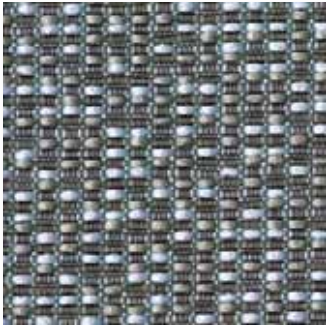
4108-105 Malted Milk



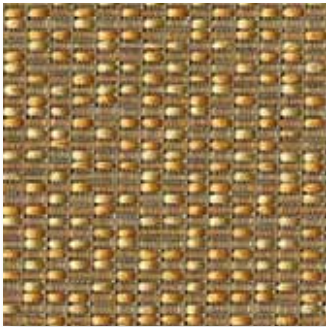
4108-802 Dapple Grey



4108-104 Maize



4108-803 Graphite



4108-106 Ochre

Usage	Panels
Width	66"
Repeat	V-16" H-7 1/2"
Weight	15.04 oz./lin.yd.
Contents	100% Recycled Polyester
Cleaning Code	WS
Warranty	10 years

Passes ASTM E-84 Unadhered Class A

Custom colors available through Unique Solutions.

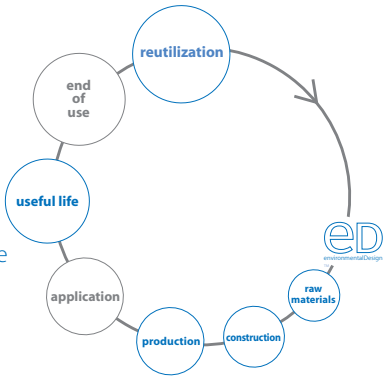
Meets or exceeds these ACT Performance standards:



* ACT Registered Certification Marks

environmental Design

- recycled ingredients
- compatible for closed loop
- energy use
- water use
- reutilization of production waste
- green cleaning compatible
- low emitting
- recyclable



There may be variation in color, texture and finish between the sample shown and the actual product.

© Designtex

Designtex
800 221 1540
designtex.com

Designtex operates as a carbon neutral company
A Steelcase Company

DESIGN
TEX

Foxtrot
6375

Panel



Foxtrot
6375



6375-101 Oyster



6375-501 Sage



6375-102 Mineral



6375-803 Cement



6375-201 Bisque



6375-701 Pebble



6375-801 Chalk



6375-804 Smoke



6375-802 Heather

Usage	P	Panel Systems
Width	66"	
Repeat	V- 4" H- 4"	
Weight	9.9 oz./lin.yd.	
Backing	Light Acrylic	
Contents	100% Polyester	
Cleaning Code	WS	
Warranty	10 years	

Fabric shown railroaded.

Passes ASTM E-84 Unadhered Class A

Custom colors available through Unique Solutions.

Meets or exceeds these ACT Performance standards:



* ACT Registered Certification Marks

There may be variation in color, texture and finish
between the sample shown and the actual product.

© Designtex

Designtex
800 221 1540
designtex.com

Designtex operates as a carbon neutral company
A Steelcase Company

DESIGN
Tex

Gravity
4106

Panel

environmental Design



Gravity
4106



4106-801 Ice



4106-802 Shale



4106-103 Sage



4106-803 Aluminum



4106-101 Cream



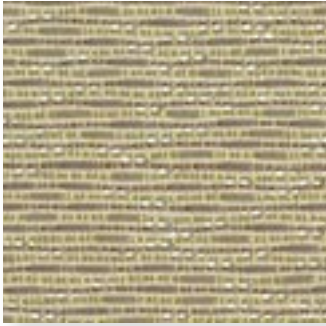
4106-804 Carbon



4106-102 Lichen



4106-105 Earth



4106-104 Flax

Usage	Panel Systems
Width	66"
Repeat	none
Weight	11.04 oz./lin.yd.
Contents	100% Recycled Polyester
Cleaning Code	WS
Warranty	10 years

Passes ASTM E-84 Unadhered Class A

Custom colors available through Unique Solutions.

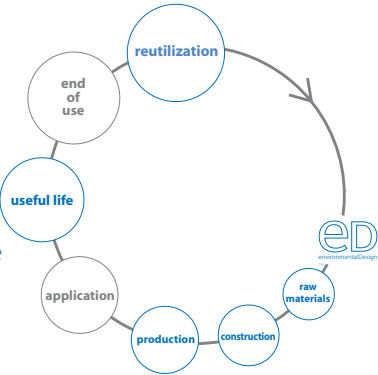
Meets or exceeds these ACT Performance standards:



* ACT Registered Certification Marks

environmental Design

recycled ingredients
compatible for closed loop
energy use
water use
reutilization of production waste
green cleaning compatible
low emitting
recyclable



There may be variation in color, texture and finish between the sample shown and the actual product.

© Designtex

Designtex
800 221 1540
designtex.com

Designtex operates as a carbon neutral company
A Steelcase Company

DESIGN
TEX

Komposition
2745

Upholstery
Panel



Komposition
2745



2745-101 Flemish White



2745-102 Plaster



2745-103 Van Dyke Brown



2745-201 Lemon Yellow



2745-202 Gold Leaf



2745-203 Umber



2745-301 Cadmium Red



2745-302 Alizarin Crimso



2745-401 Delft Blue



2745-402 Ultramarine



2745-501 Sap Green



2745-502 Cobalt Green



2745-503 Verdigris



2745-504 Cerulean



2745-701 Winsor Orange



2745-801 Titanium



2745-802 Ivory Black



2745-803 Neutral Tint



2745-804 Graphite

Note: image has been sized to represent colors

Usage	Upholstery Panel Systems
Width	55"
Repeat	V-16 1/4" H-14 1/4"
Weight	12.16 oz./lin.yd.
Contents	100% Polyester
Abrasion	100,000 Wyzenbeek
Cleaning Code	WS
Warranty	10 years

Fabric shown railroaded

Passes ASTM E-84 Unadhered Class A

Custom colors available through Unique Solutions.

Meets or exceeds these ACT Performance standards:

* ACT Registered Certification Marks

GuggenheimMUSEUM

Abstract Matters is the second collection resulting from a unique, ongoing relationship between Designtex and the Guggenheim Museum.

There may be variation in color, texture and finish between the sample shown and the actual product.

© Designtex
Designtex
800 221 1540
designtex.com

Designtex operates as a carbon neutral company
A Steelcase Company

DESIGN
TEX

Omar
2865

Upholstery
Panel

environmental Design



Omar

2865



2865-101 Salt Bed



2865-102 Pewter



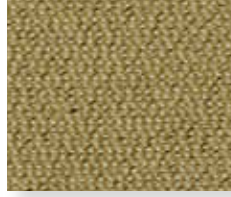
2865-103 Fieldstone



2865-104 Scrub Oak



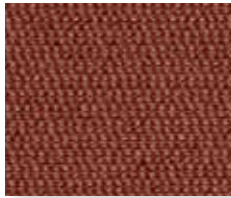
2865-105 Cocoa



2865-201 Antique Gold



2865-202 Carmel



2865-301 Sappenwood



2865-302 Carmine



2865-303 Wineberry



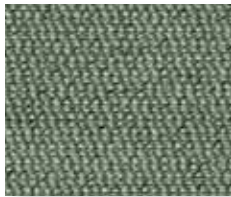
2865-401 Slate



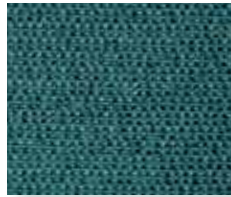
2865-402 Navy



2865-403 Blue Ice



2865-404 Seaglass



2865-405 Adriatic



2865-501 Pampas Grass



2865-502 Ficus Tree



2865-503 Hunter



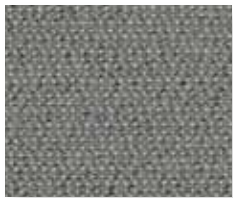
2865-504 Evergreen



2865-601 Wild Grape



2865-701 Persimmon



2865-801 Cloudburst

Usage	Upholstery Panel Systems
Width	59"
Repeat	none
Weight	16.64 oz./lin.yd.
Contents	100% Recycled Polyester
Abrasion	100,000 Wyzenbeek
Cleaning Code	WS
Warranty	10 years

Passes ASTM E-84 Unadhered Class A

Custom colors available through Unique Solutions.

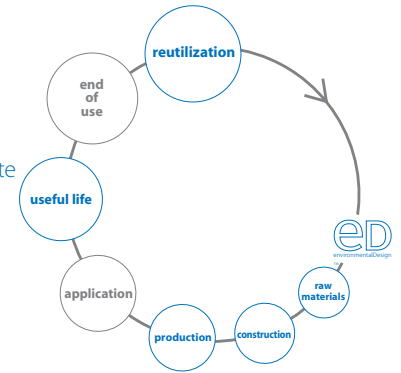
Meets or exceeds these ACT Performance standards:



* ACT Registered Certification Marks

environmental Design

recycled ingredients
compatible for closed loop
energy use
water use
reutilization of production waste
low emitting
recyclable



There may be variation in color, texture and finish between the sample shown and the actual product.

© Designtex

Designtex
800.221.1540
designtex.com

Designtex operates as a carbon neutral company

A Steelcase Company

DESIGN
Tex

Plateau
5120

Panel

environmental Design



Plateau
5120



5120-102 Desert



5120-201 Phoenix



5120-101 Cottonwood



5120-701 Sedona



5120-103 Pumice



5120-501 Aspen



5120-801 Boulder



5120-402 Blue River



5120-802 Black Canyon



5120-401 Mirage

Usage	Panels Systems
Width	66"
Repeat	V-18" H-8 1/4"
Weight	11.36 oz./lin.yd.
Contents	100% Recycled Polyester
Cleaning Code	WS
Warranty	10 years

Fabric shown railroaded.

Passes ASTM E-84 Unadhered Class A

Custom colors available through Unique Solutions.

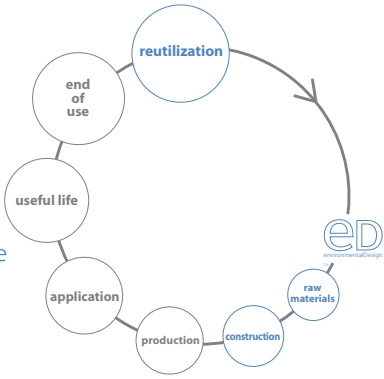
Meets or exceeds these ACT Performance standards:



* ACT Registered Certification Marks

environmental Design

recycled ingredients
compatible for closed loop
energy use
water use
reutilization of production waste
low emitting
recyclable



There may be variation in color, texture and finish between the sample shown and the actual product.

© Designtex

Designtex
800 221 1540
designtex.com

Designtex operates as a carbon neutral company
A Steelcase Company

DESIGN
TEX

Ringlet
5119

Panel

environmental Design



Ringlet
5119



5119-101 Rice



5119-103 Aluminum



5119-102 Shell



5119-401 Iceland



5119-201 Golden



5119-801 Basalt



5119-501 Shade

Usage	Panel Systems
Width	66"
Repeat	V-8" H-9"
Weight	11.4 oz./lin.yd.
Contents	100% Recycled Polyester
Cleaning Code	WS
Warranty	10 years

Fabric shown railroaded.

Passes ASTM E-84 Unadhered Class A

Custom colors available through Unique Solutions.

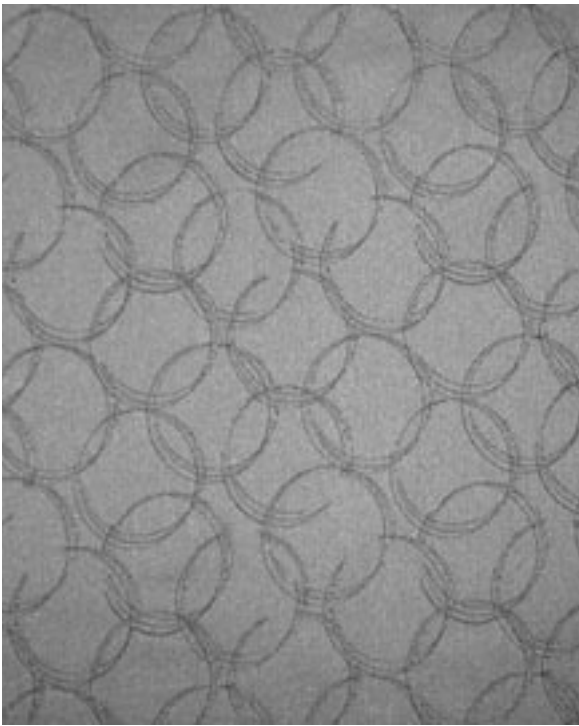
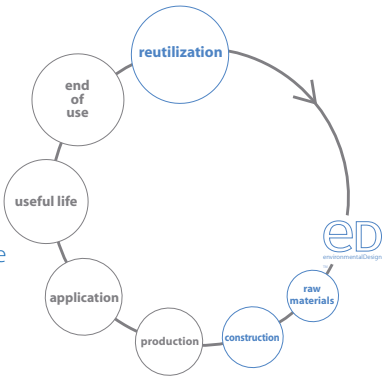
Meets or exceeds these ACT Performance standards:



* ACT Registered Certification Marks

environmental Design

recycled ingredients
compatible for closed loop
energy use
water use
reutilization of production waste
low emitting
recyclable



There may be variation in color, texture and finish between the sample shown and the actual product.

© Designtex

Designtex
800 221 1540
designtex.com

Designtex operates as a carbon neutral company
A Steelcase Company

DESIGN
Tex

Rivergrass
2690

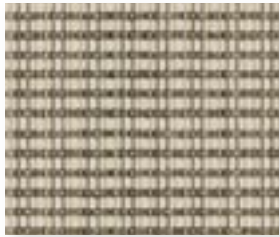
Upholstery
Panel Systems

environmental Design



Rivergrass

2690



2690-101 Parchment



2690-103 Woodwash



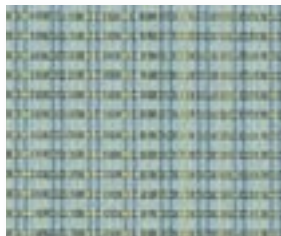
2690-105 Sepia



2690-301 Pimento



2690-403 Blue Jay



2690-404 Lagoon



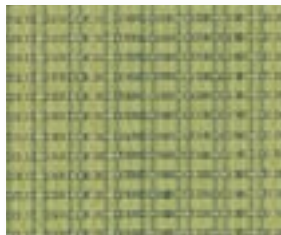
2690-405 Cornflower



2690-407 Larkspur



2690-501 Bamboo



2690-503 Parrot



2690-701 Curry



2690-702 Tangerine



2690-802 Driftwood

Usage	Upholstery
Width	Panel Systems
Repeat	60"
Repeat	V-5" H-6 3/4"
Weight	15.5 oz./lin.yd.
Contents	100% Recycled Polyester
Abrasion	42,000 Wyzenbeek
Cleaning Code	WS
Warranty	10 years vertical
	5 years upholstery

Passes ASTM E-84 Unadhered Class A

Custom colors available through Unique Solutions.

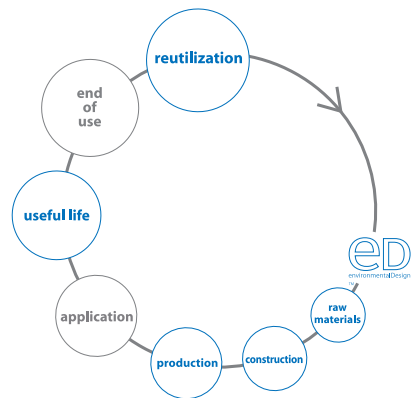
Meets or exceeds these ACT Performance standards:



* ACT Registered Certification Marks

environmental Design

recycled ingredients
compatible for closed loop
energy use
water use
reutilization of production waste
low emitting
recyclable



Rivergrass was developed on an end and end warp and utilizes a weave that allows the warp ends to roll during the weaving process. The rolling of warp ends may cause the appearance or lack of vertical streaks in a random fashion. While this aesthetic is usually consistent within a single warp run, variation may occur within a roll.

There may be variation in color, texture and finish between the sample shown and the actual product.

© Designtex

Designtex

800 221 1540

designtex.com

Designtex operates as a carbon neutral company

A Steelcase Company

Rowan
4102

Panel



Rowan
4102



4102-802 Polar



4102-201 Sand Drift



4102-101 Barley



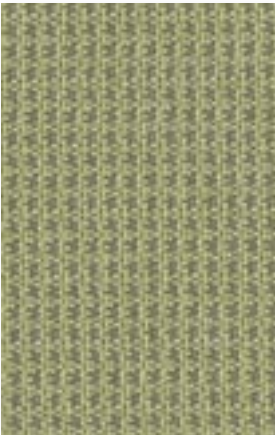
4102-202 Rye



4102-801 Mountain Ash



4102-102 Sumac



4102-501 Wild Grass

Usage	Panel Systems
Width	66"
Repeat	none
Weight	11.04 oz./lin.yd.
Contents	100% Recycled Polyester
Cleaning Code	WS
Warranty	10 years

Fabric shown railroaded.

Passes ASTM E-84 Unadhered Class A

Custom colors available through Unique Solutions.

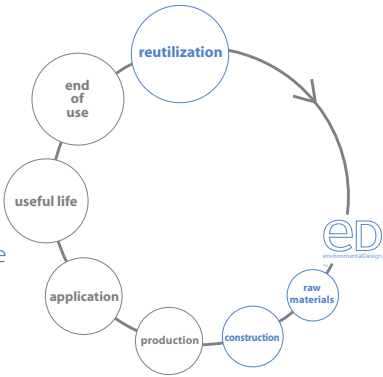
Meets or exceeds these ACT Performance standards:



* ACT Registered Certification Marks

environmental Design

recycled ingredients
compatible for closed loop
energy use
water use
reutilization of production waste
low emitting
recyclable



There may be variation in color, texture and finish
between the sample shown and the actual product.

© Designtex

Designtex
800 221 1540
designtex.com

Designtex operates as a carbon neutral company
A Steelcase Company

Shift
4113

Panel

Shift
4113



4113-102 Pumice



4113-201 Straw



4113-401 Waterfall



4113-501 Celadon



4113-105 Bisque



4113-106 Clay



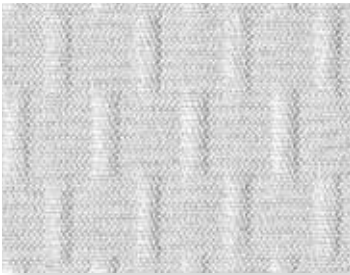
4113-101 Chalk



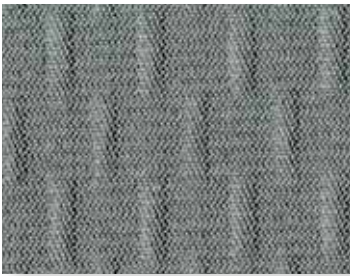
4113-801 Cloud



4113-802 Ash



4113-103 Stone



4113-803 Shale



4113-104 Umber

Usage	Panel Systems
Width	67 1/2"
Repeat	V-1/2" H-3/4"
Weight	11.9 oz./lin.yd.
Contents	88.4% Recycled Polyester, 11.6% Polyester
Cleaning Code	WS
Warranty	10 years

Passes ASTM E-84 Unadhered Class A

Custom colors available through Unique Solutions.

Meets or exceeds these ACT Performance standards:

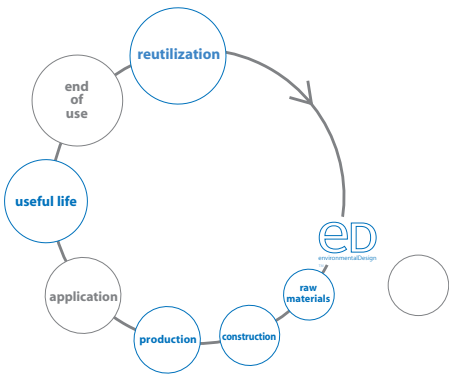


* ACT Registered Certification Marks

This product may contribute to LEED Materials and Resources Credit for Recycled Content.

environmental Design

recycled ingredients
compatible for closed loop
energy use
water use
green cleaning compatible
low emitting
recyclable



There may be variation in color, texture and finish between the sample shown and the actual product.

© Designtex

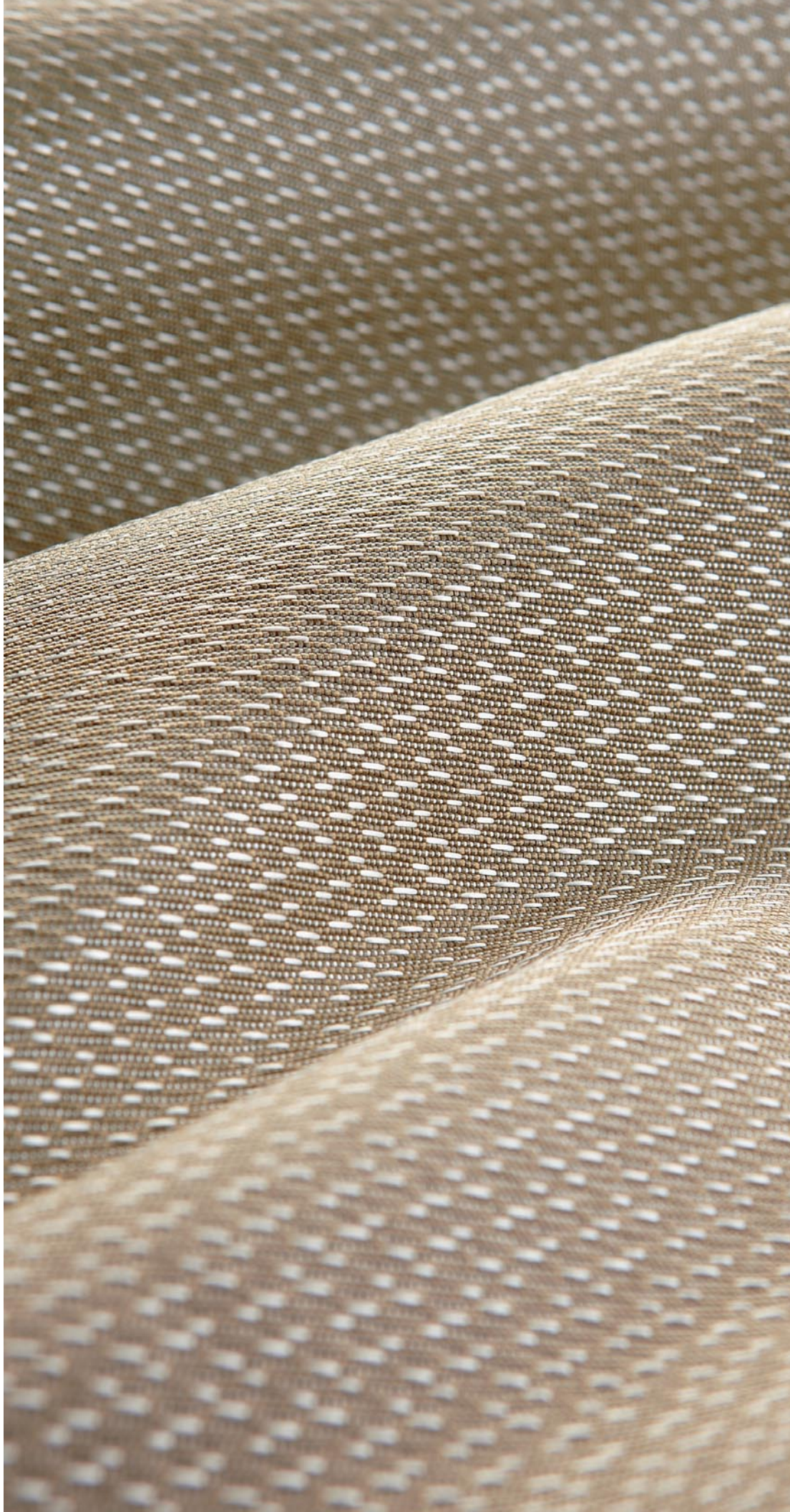
Designtex
800 221 1540
designtex.com

Designtex operates as a carbon neutral company
A Steelcase Company

DESIGN
Tex

Shimmer
4208

Panel



Shimmer
4208



4208-101 Astral



4208-501 Gemini



4208-102 Pegasus



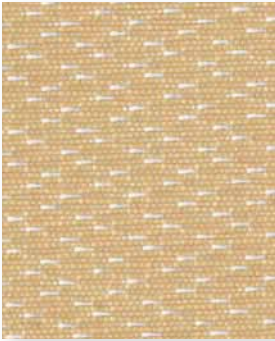
4208-402 Aquarius



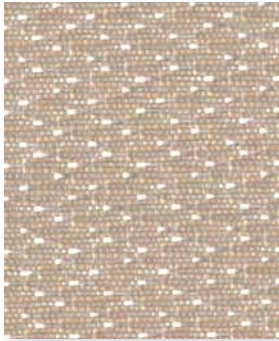
4208-104 Phoenix



4208-803 Orion2



4208-201 Corona



4208-103 Stalactite



4208-202 Soleil



4208-802 Gemeaux

Usage	Panel Systems
Width	66"
Repeat	none
Weight	14 oz./lin.yd.
Backing	Light Acrylic
Contents	100% Polyester
Cleaning Code	WS
Warranty	10 years

Passes ASTM E-84 Unadhered Class A

Custom colors available through Unique Solutions.

Meets or exceeds these ACT Performance standards:



* ACT Registered Certification Marks

There may be variation in color, texture and finish
between the sample shown and the actual product.

© Designtex

Designtex
800 221 1540
designtex.com

Designtex operates as a carbon neutral company
A Steelcase Company

Singing in the Rain
6418

Upholstery
Panel Systems

environmental Design



Singing in the Rain
6418



6418-101 White



6418-102 Ecru



6418-103 Flaxseed



6418-104 Mocha



6418-105 Khaki



6418-201 Curry



6418-301 Port



6418-401 Dusk



6418-402 Indigo



6418-501 Endive



6418-502 Ivy



6418-503 Moss



6418-601 Raisin



6418-701 Pumpkin



6418-801 Haze



6418-802 Nickel



6418-804 Charcoal

Usage	Upholstery Panel Systems
Width	70"
Repeat	none
Weight	10.60 oz./lin.yd.
Finish	NANO-TEX™ Resists Spills
Backing	Acrylic
Contents	100% Recycled Polyester
Abrasion	100,000 Wyzenbeek
Cleaning Code	WS
Warranty	10 years

Passes ASTM E-84 Unadhered Class A

Custom colors available through Unique Solutions.

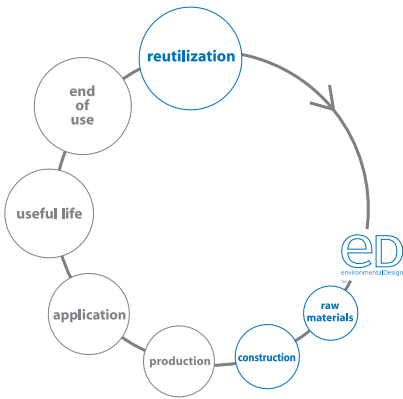
Meets or exceeds these ACT Performance standards:



* ACT Registered Certification Marks



environmental Design
recycled ingredients
compatible for closed loop
recyclable



There may be variation in color, texture and finish
between the sample shown and the actual product.

Designtex
800 221 1540
designtex.com

Designtex operates as a carbon neutral company
A Steelcase Company

DESIGN
Tex

Solara
4101

Panel

environmental Design



Solara
4101



4101-101 Parchment



4101-104 Sugar



4101-102 Dune



4101-801 Cement



4101-201 Sesame



4101-802 Stone



4101-202 Goldenrod



4101-401 Glacier



4101-103 Toffee



4101-501 Pear

Usage	Panel Systems
Width	66"
Repeat	V-20" H-none
Weight	11.04 oz./lin.yd.
Contents	100% Recycled Polyester
Cleaning Code	WS
Warranty	10 years

Passes ASTM E-84 Unadhered Class A

Custom colors available through Unique Solutions.

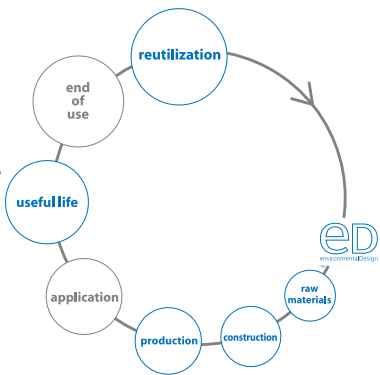
Meets or exceeds these ACT Performance standards:



* ACT Registered Certification Marks

environmental Design

recycled ingredients
compatible for closed loop
energy use
water use
reutilization of production waste
low emitting
recyclable



There may be variation in color, texture and finish between the sample shown and the actual product.

© Designtex

Designtex
800 221 1540
designtex.com

Designtex operates as a carbon neutral company
A Steelcase Company

DESIGN
TEX

Solitaire
4969

Panel

environmental Design



Solitaire
4969



4969-102 Camel



4969-501 Willow



4969-103 Taupe



4969-502 Lichen



4969-201 Nutmeg



4969-801 Rice



4969-101 Chamois



4969-802 Silver



4969-401 Mist



4969-601 Violet



4969-402 Sky



4969-803 Pewter



4969-403 Spearmint

Usage	Panel Systems
Width	66"
Repeat	V-1/4" H-1/2"
Weight	13.80 oz./lin.yd.
Contents	53% Recycled Polyester 47% Polyester
Cleaning Code	WS
Warranty	10 years

Fabric shown railroaded.

Passes ASTM E-84 Unadhered Class A

Custom colors available through Unique Solutions.

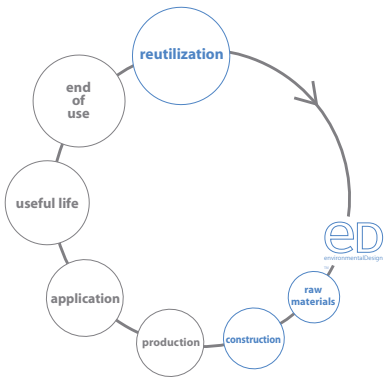
Meets or exceeds these ACT Performance standards:



* ACT Registered Certification Marks

environmental Design

recycled ingredients
compatible for closed loop
recyclable



There may be variation in color, texture and finish between the sample shown and the actual product.

© Designtex

Designtex
800 221 1540
designtex.com

Designtex operates as a carbon neutral company
A Steelcase Company

DESIGN
TEX

Sumo
6499

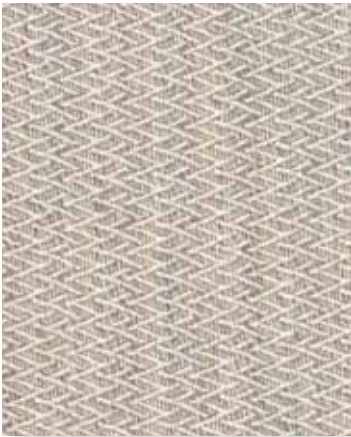
Panel



Sumo
6499



6499-101 Wheat



6499-801 Ash



6499-501 Lichen



6499-102 Oatmeal



6499-201 Rye



6499-401 Stone



6499-701 Cocoa

Usage	Panel Systems
Width	66"
Backing	Light Acrylic
Repeat	none
Weight	11.5 oz./lin.yd.
Contents	100% Polyester
Cleaning Code	S
Warranty	10 years

Passes ASTM E-84 Unadhered Class A

Fabric shown railroaded

Custom colors available through Unique Solutions.

Meets or exceeds these ACT Performance standards:



* ACT Registered Certification Marks

There may be variation in color, texture and finish between the sample shown and the actual product.

© Designtex

Designtex
800 221 1540
designtex.com

Designtex operates as a carbon neutral company
A Steelcase Company

DESIGN
TEX

Titanium
2842

Upholstery
Panel



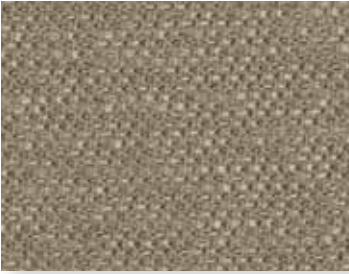
Titanium
2842



2842-101 Opal



2842-102 Sandstone



2842-103 Platinum



2842-104 Quartz



2842-105 Tiger's Eye



2842-106 Zircon



2842-201 Pyrite



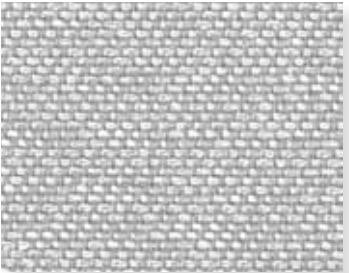
2842-401 Lapis



2842-501 Patina



2842-701 Copper



2842-801 Silver



2842-802 Onyx

Usage	Upholstery Panel Systems
Width	54"
Repeat	none
Weight	14.50 oz./lin.yd.
Contents	100% Trevira™ CS
Abrasion	100,000 Wyzenbeek
Cleaning Code	WS
Warranty	10 years

Passes ASTM E-84 Unadhered Class A

Custom colors available through Unique Solutions.

Meets or exceeds these ACT Performance standards:



* ACT Registered Certification Marks

GuggenheimMUSEUM

Material Matters is the third collection resulting from a unique, ongoing relationship between Designtex and the Guggenheim Museum.

There may be variation in color, texture and finish between the sample shown and the actual product.

© Designtex

Designtex
800 221 1540
designtex.com

Designtex operates as a carbon neutral company
A Steelcase Company

DESIGN
TEX

Twist
4139

Panel



Twist
4139



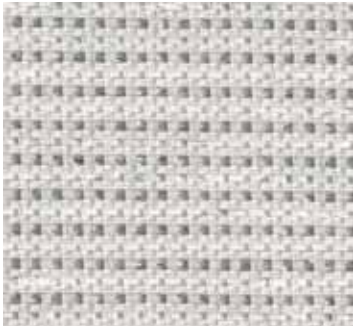
4139-102 Clay



4139-101 Snowflake



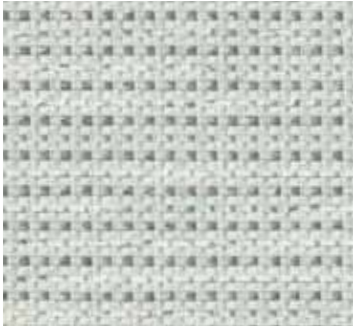
4139-501 Celadon



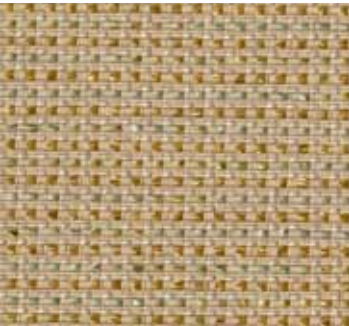
4139-801 Aluminum



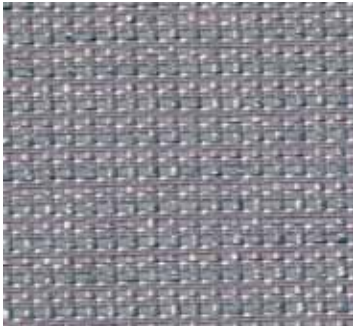
4139-103 Resin



4139-401 Blue Ice



4139-201 Amber



4139-802 Ash



4139-104 Cocoa



4139-803 Java

Usage	Panel Systems
Width	66"
Repeat	none
Weight	14 oz./lin.yd.
Contents	66% Recycled Polyester 34% Polyolefin
Cleaning Code	WS
Warranty	10 years

Passes ASTM E-84 Unadhered Class A

Custom colors available through Unique Solutions.

Meets or exceeds these ACT Performance standards:



* ACT Registered Certification Marks

There may be variation in color, texture and finish between the sample shown and the actual product.

© Designtex

Designtex
800 221 1540
designtex.com

Designtex operates as a carbon neutral company
A Steelcase Company

DESIGN
TEX

Velocity
4107

Panel

environmental Design



Velocity
4107



4107-101 Pearl



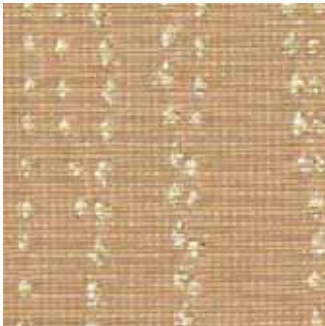
4107-801 Silver Streak



4107-102 Straw



4107-802 Glacier



4107-103 Wheat



4107-105 Clay



4107-104 Toasted Sesame



4107-803 Stone



4107-106 Lotus



4107-804 Ink

Usage	Panel Systems
Width	66"
Repeat	V-21" H-16 1/2"
Weight	12 oz./lin.yd.
Contents	100% Recycled Polyester
Cleaning Code	WS
Warranty	10 years

Passes ASTM E-84 Unadhered Class A

Custom colors available through Unique Solutions.

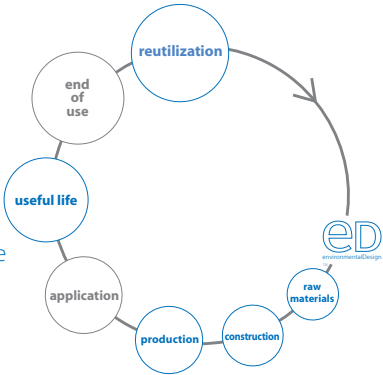
Meets or exceeds these ACT Performance standards:



* ACT Registered Certification Marks

environmental Design

recycled ingredients
compatible for closed loop
energy use
water use
reutilization of production waste
green cleaning compatible
low emitting
recyclable



There may be variation in color, texture and finish between the sample shown and the actual product.

© Designtex

Designtex
800 221 1540
designtex.com

Designtex operates as a carbon neutral company
A Steelcase Company

